



**Think Ergonomics**



## **ERGONOMIC WORKSTATION**

**multifunctional ♦ modular ♦ practical**

- ♦ Futuristic top model, proven 10,000 times over
- ♦ The ideal, ergonomic sit-down/stand-up workstation
- ♦ Electrical adjustment by pressing a button
- ♦ Intelligent modular design, plus numerous model variations

electrically  
height adjustable



Electrically height adjustable, highest quality, sit-down/stand-up workstation, with sample set-up (power outlet strip, task light, tiltable surfaces, swing arm, footrest, etc.)

# ERGONOMIC WORKSTATION

– The Catalyst for Performance Increase

Ergonomics is the science of the relationship between man and work. It relates to all influences on the work process. The goal of ergonomic research is to transform work in such a way that it combines optimal work performance with a minimum of stress and wear for the worker. We have achieved this objective with our new workplace system "ERGONOMIC", because ergonomic workplaces are flexible workplaces that are designed to allow a large degree of freedom of movement. Here are some of the benefits of using "ERGONOMIC":

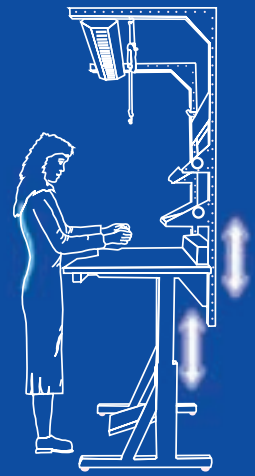
- ♦ An optimal working position increases productivity.
- ♦ Easy adjustability and a large adjustment range ensure that each employee can find

the right working position regardless of his or her physical size.

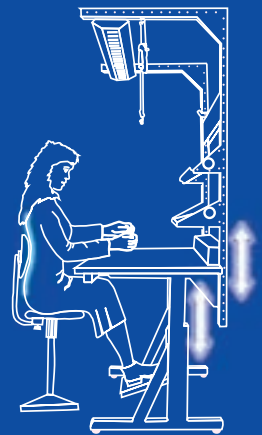
- ♦ The possibility to move comfortably from a sitting to a standing position adds variety to the work process and ensures that muscles and joints are subject to equal pressure.
- ♦ All materials and tools are optimally positioned within reach, reducing movement distances to a minimum.
- ♦ There are no strain factors such as faulty posture, remaining in the same tense position for long periods, unbalanced strain, or inadequate lighting.
- ♦ Instead you get work satisfaction, company identification, health, long-term efficiency, work safety and full productivity.

## You Can Order All These Individually:

Name:	Description:	Art.-No.:
1 Support stand "KES-2000-B"	electrically height adjustable	230 V, 50 Hz 16-01550
	sit-down/stand-up workstation	220 V, 60 Hz 16-01650
		110 V, 60 Hz 16-01950
2 Table tops	table top standard, support light Resopal, PVC-bandings 1,500 x 800 x 30 mm (approx. 59 x 31.5 x 1.2 in.)	16-00164
3 Basic upright support	consisting of: support left with rail 1,700 mm (approx. 67 in.) support right with rail 1,700 mm (approx. 67 in.) connecting strut with EURO perforation	16-00200
4 Utility shelf	tiltable, 300 mm deep (approx. 12 in.)	16-00201
	tiltable, 200 mm deep (approx. 8 in.)	16-00202
5 Monitor tray	with swing arm 300 x 300 mm (approx. 12 x 12 in.)	16-00203
6 Tool caddy	with swing arm	16-00204
7 Power outlet strip	standard consisting of: front: 4 sockets, 1 emergency stop switch, 1 light switch back: 2 power sockets for table operation and light 1 mains cable optional: compressed-air connection	16-00205
8 Tool / light support kit	consisting of: 2 x 770 mm (approx. 2 x 30 in.) rails with screw-on plates	16-00206
9 Balancer rail	consisting of: C-profile rails with one trolley end stopper left / right	16-00207
10 Workstation task light	system lamp standard with electronic fluorescent lamp ballast (power consumption ca. -25%, long service life, flicker-free, gentle light) including fixing rail and cable with plug for connection to energy strip	16-00208
11 Tool balancer	load: 0.6 - 2.0 kg (approx. 1.3 - 4.4 lbs.)	16-00209
12 Footrest	height adjustable, tiltable	11-00852
13 Service trolley	consisting of: basic frame with castors and 2 height-adjustable shelves	11-00851
14 Attachment hooks	attachment hook No. 1593, Size 50	16-00212
	attachment hook No. 1593, Size 160	16-00213
	attachment hook No. 1593, Size 200	16-00214



The ergonomic sit-down/stand-up workstation with adjustable working and upright-supports heights

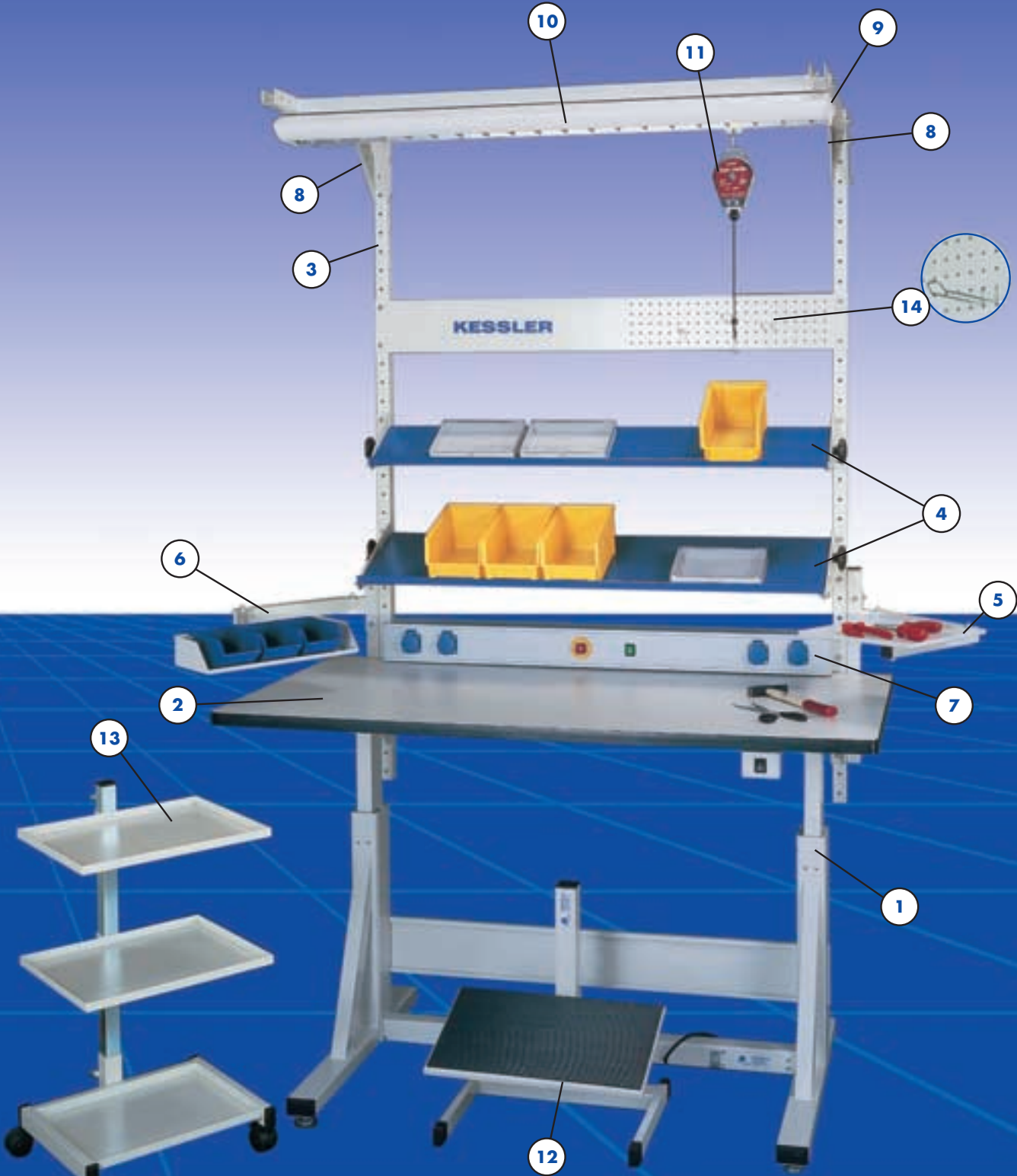


Electrically height-adjustable workstation also available without upright-supports



# ERGONOMIC

...by name and by nature.



Variable – Inexpensive – Ergonomic:  
The KESSLER-Class Workstation.



## FEATURES

- ♦ Versatile in numerous fields of application.
- ♦ Heavy duty steel design for ultimate stability.
- ♦ Precise height adjustment due to special plastic guides, so very smooth up and down movement.
- ♦ Continuous tests of over 10,000 trouble-free up and down movements.
- ♦ Maintenance-free.
- ♦ Can be completely disassembled for small transport and storage volume.
- ♦ Quick and easy assembly.
- ♦ Mechanical design, therefore absolutely parallel table top supports.
- ♦ Big accessory package for expanding the modular system, e.g. attachable leg extension.

## TECHNICAL DATA WORKSTATION

- ♦ Lift range: 715 mm to 1,115 mm (approx. 28 to 44 in.).
- ♦ Stroke: 400 mm (approx. 16 in.).
- ♦ Load capacity: max. 200 kg. (approx. 440 lbs.).
- ♦ Lift speed: ca. 14 mm / sec. (approx. 0.6 in. / sec.).
- ♦ Standard dimensions
  - stand: Length x depth 1,200 x 760 mm (approx. 47 x 30 in.).
  - table top: Length x depth x thickness 1,500 x 800 x 30 mm (approx. 59 x 31.5 x 1.2 in.).
- ♦ Rated voltage: Standard 230 V / 50 Hz.  
US-Version 220 V / 60 Hz.  
or 110 V / 60 Hz.
- ♦ Surface: Powder coated  
RAL 9002 grey-white  
RAL 5002 ultramarine



## ON REQUEST

- ♦ Special heights
- ♦ Special lengths
- ♦ Other RAL colours
- ♦ Special table tops
- ♦ Mobile versions
- ♦ Customized solutions

## APPLICATIONS

Assembly tables, packing tables, inspection tables, plaiting tables, commissioning tables, workplaces for changing shifts, R+D workplaces, model construction tables, etc.

Your specialist dealer:



KESSLER GmbH  
Industriegebiet • Auweg 10  
D-72362 Nusplingen  
Tel.: ++ 49 (0) 74 29 / 93 19-0  
Fax: ++ 49 (0) 74 29 / 93 19-10  
[www.kessler-ergo.com](http://www.kessler-ergo.com)  
[info@kessler-ergo.com](mailto:info@kessler-ergo.com)